



# **LiteCommerce Control Panel for Windows**

## **Reference manual**

Copyright © 2004-2005 [Creative Development](#). All rights reserved.

## Table of Contents

<b>Introduction .....</b>	<b>3</b>
<b>1. Configuring LiteCommerce Control Panel .....</b>	<b>4</b>
a. Defining online stores.....	4
b. Configuring proxy settings.....	6
c. Specifying the default HTML editor .....	7
<b>2. Backing Up and Restoring Your Online Store Data .....</b>	<b>8</b>
<b>3. Customizing the Design of Your Online Store.....</b>	<b>10</b>
<b>4. Moving Your Online Store to a New Location.....</b>	<b>12</b>
<b>5. Upgrading Your Online Store .....</b>	<b>14</b>

### Introduction

LiteCommerce Control Panel for Windows is a handy utility designed to help online store administrators maintain their LiteCommerce-based stores. Your online store is fully manageable via the LiteCommerce web interface, however when direct manipulation with LiteCommerce files and databases is required (e.g.: restoring from backup, customizing design templates, upgrading or moving the store to a new location, etc.) using Control Panel saves you time and effort. It connects to your web server via FTP/HTTP to access files and data using the mechanisms identical to those implemented in the web administrator interface.

Control Panel for Windows is provided at no additional charge and is bundled with LiteCommerce. The utility is provided as a single executable file and does not require installation. If you used Windows Installer to perform your LiteCommerce installation, the file '**cpanel.exe**' is already present on your system under the '**Program Files/LiteCommerce/**' directory on your system disk. If you performed manual installation of LiteCommerce, you have to download the Control Panel utility from the file section of your personal HelpDesk area at: <https://secure.qualiteam.biz>.

## 1. Configuring LiteCommerce Control Panel

To start using LiteCommerce Control Panel for Windows to maintain your store you need to configure the settings of your Control Panel. Run the Control Panel executable file and click on the **'Settings'** icon to enter the settings section.

### a. Defining online stores

First you need to provide your online store location and settings in the **'Shop'** tab of the **'Setting'** section (Fig. 1):

1. specify ftp server settings;
2. specify MySQL server settings;
3. enter the store location (URL);
4. provide administrator information;
5. Click on the **'Save'** button to save your store settings.

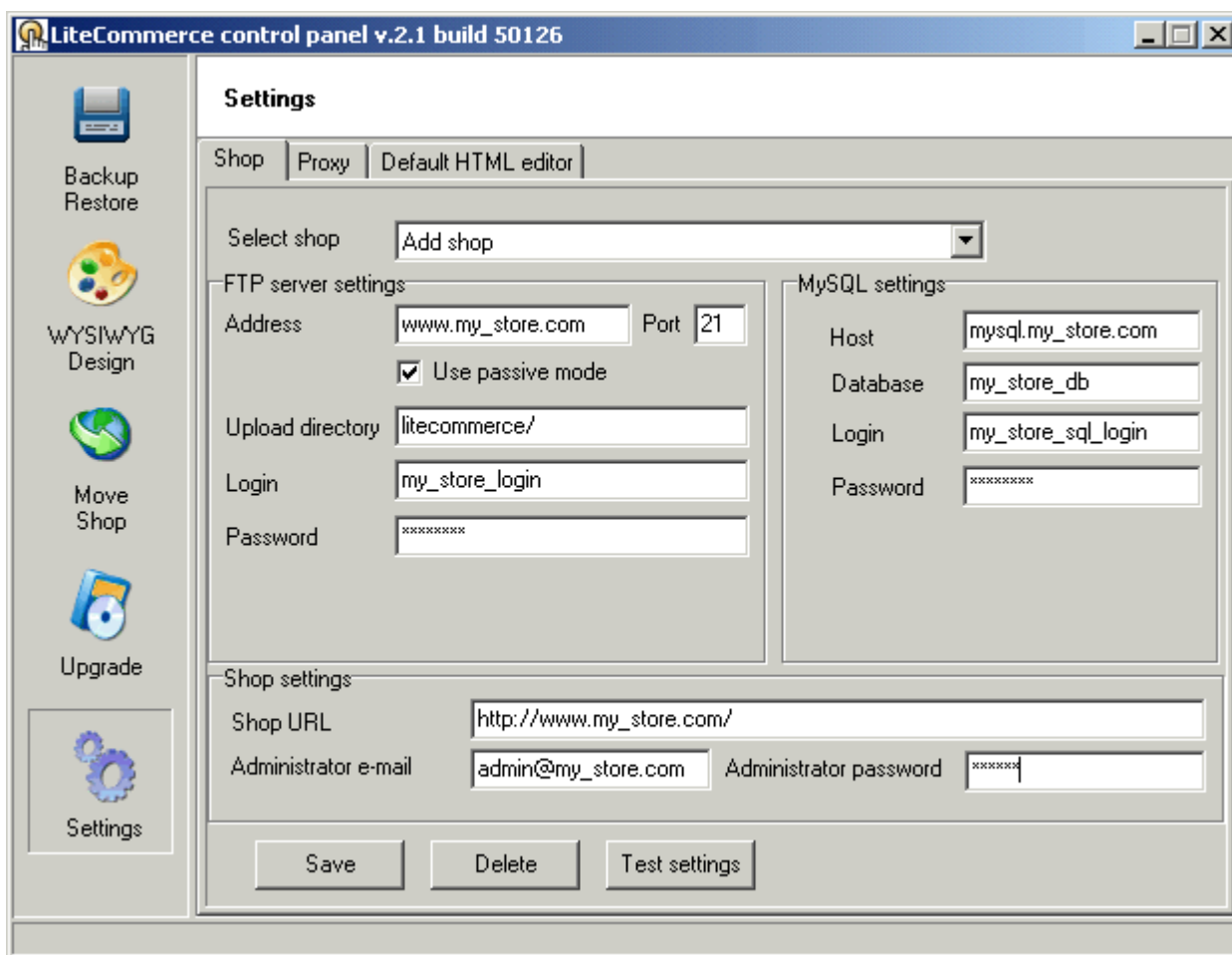
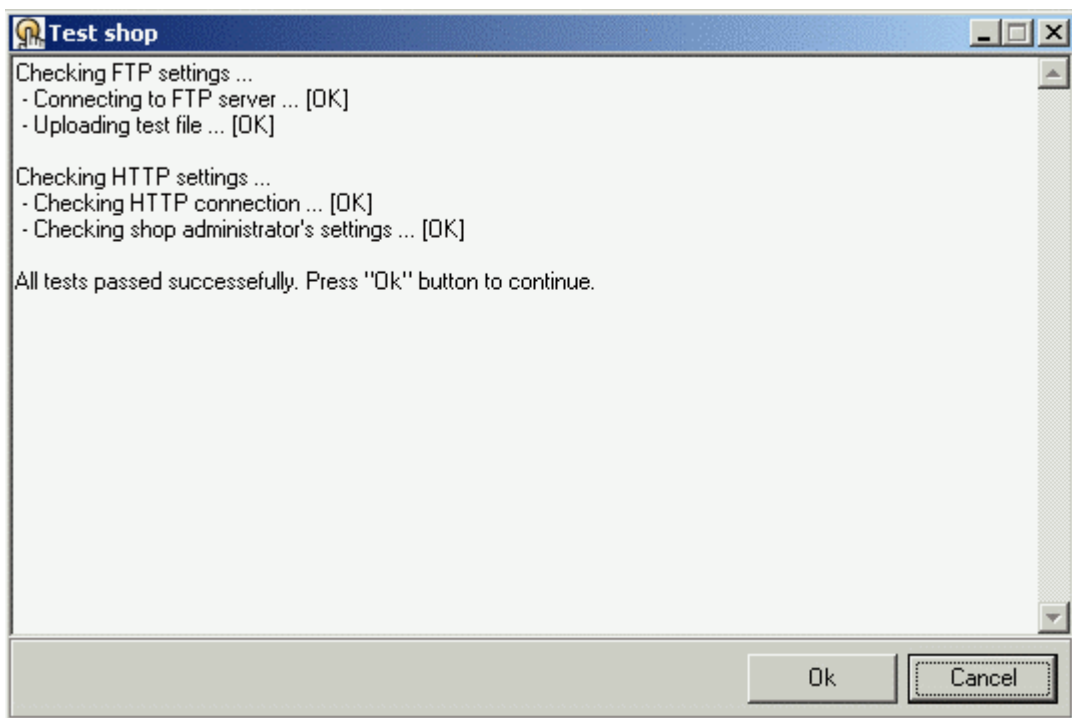


Fig.1: Configuring LiteCommerce Control Panel

You can check the correctness of the provided settings by clicking on the **'Test settings'** button. The **'Test shop'** screen provides diagnostics (Fig 2) for:

- **FTP settings:** Control Panel checks whether it is possible to access the upload directory at the given FTP server using credentials provided in the FTP server settings section. If verification is successful, a test file is being uploaded to the server.
- **HTTP settings:** Control Panel checks whether the given Shop URL is accessible via HTTP and matches the corresponding FTP upload directory – this is done by attempting to access the file previously uploaded via FTP. If verification is successful, Control Panel attempts to access the administrator zone using provided administrator credentials.



**Fig. 2: Testing your store settings**

**Note:** If verification fails at some point, further steps of the test are skipped.

You can configure Control Panel to manipulate more than one store. To configure an additional store, in the **'Select shop'** drop-down box choose the **'Add shop'** option and specify additional store settings, then click on the **'Save'** button.

Unneeded store settings can be deleted using the **'Delete'** button.

**Note:** Removing a store from the Control Panel does not affect the store: no files are being deleted or modified at the store itself during the procedure.

## b. Configuring proxy settings

If you are using proxy to connect to your store server(s), choose the **'Proxy'** tab to specify your proxy settings (Fig. 3). Enter your proxy address and port, and authentication information if necessary and click on **'Save'**.

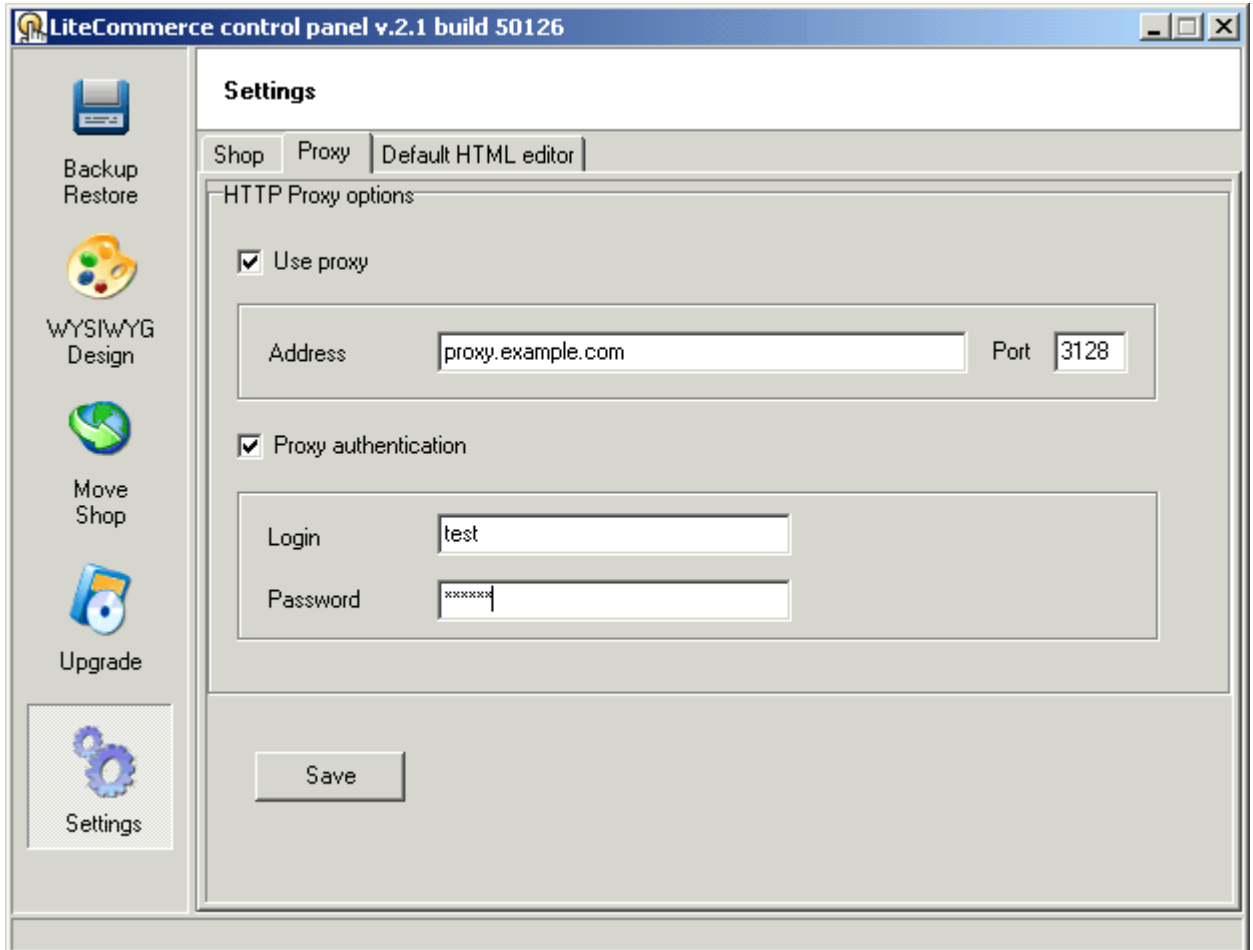


Fig. 3: Entering proxy settings

### c. Specifying the default HTML editor

With LiteCommerce Control Panel for Windows you can customize your store design using the HTML editor of your choice. Take the following steps to specify your preferred HTML editor:

1. click on the '**Default HTML editor**' tab (Fig. 4);
2. choose the location of an HTML editor to be used for template editing.

The location of HTML editor will be saved automatically.

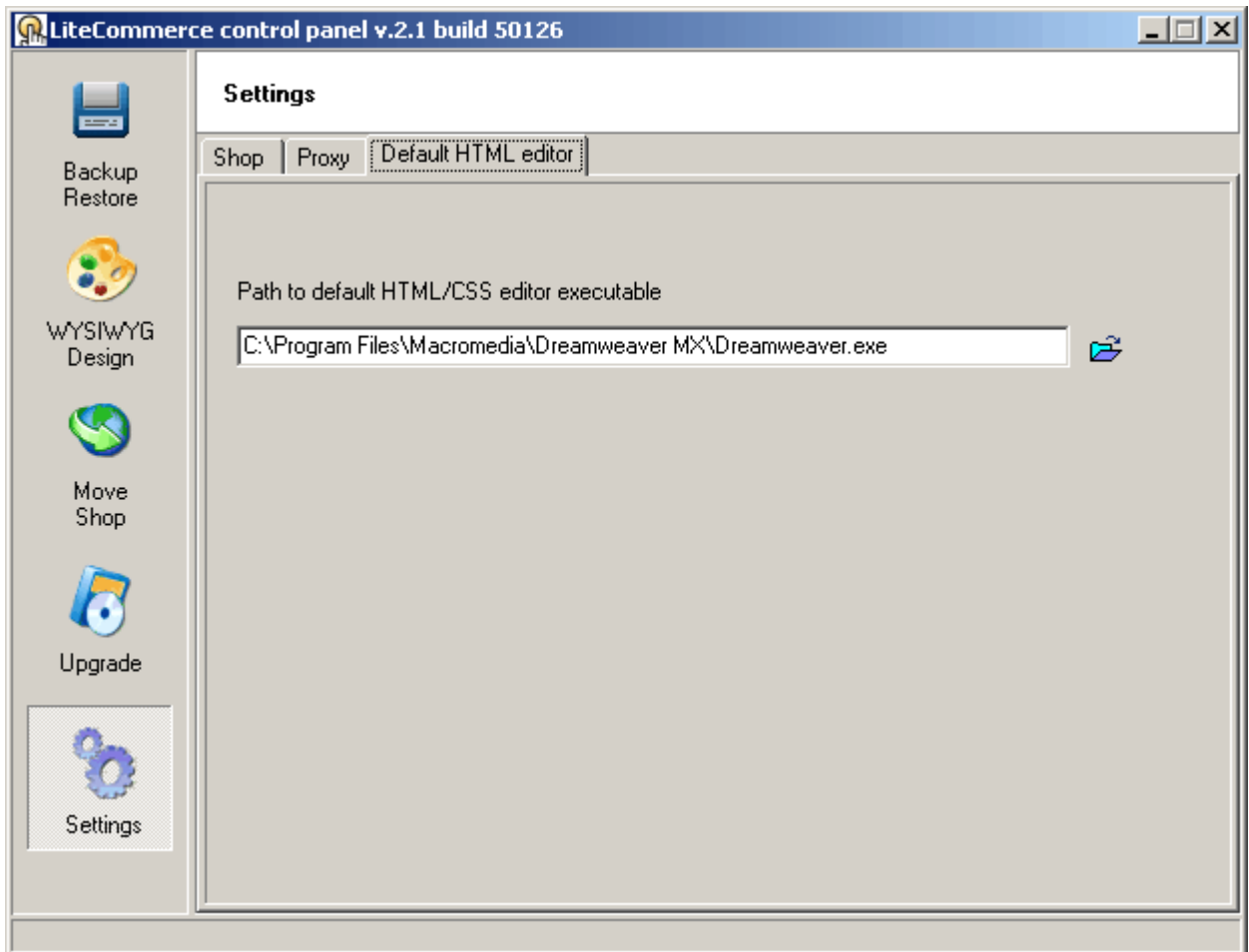


Fig. 4: Specifying default HTML editor

## 2. Backing Up and Restoring Your Online Store Data

The '**Restore/Backup**' section (Fig. 5) is intended for performing backup and restore operations on your online store(s). This chapter describes the ways to backup your store data using Control Panel for Windows utility.

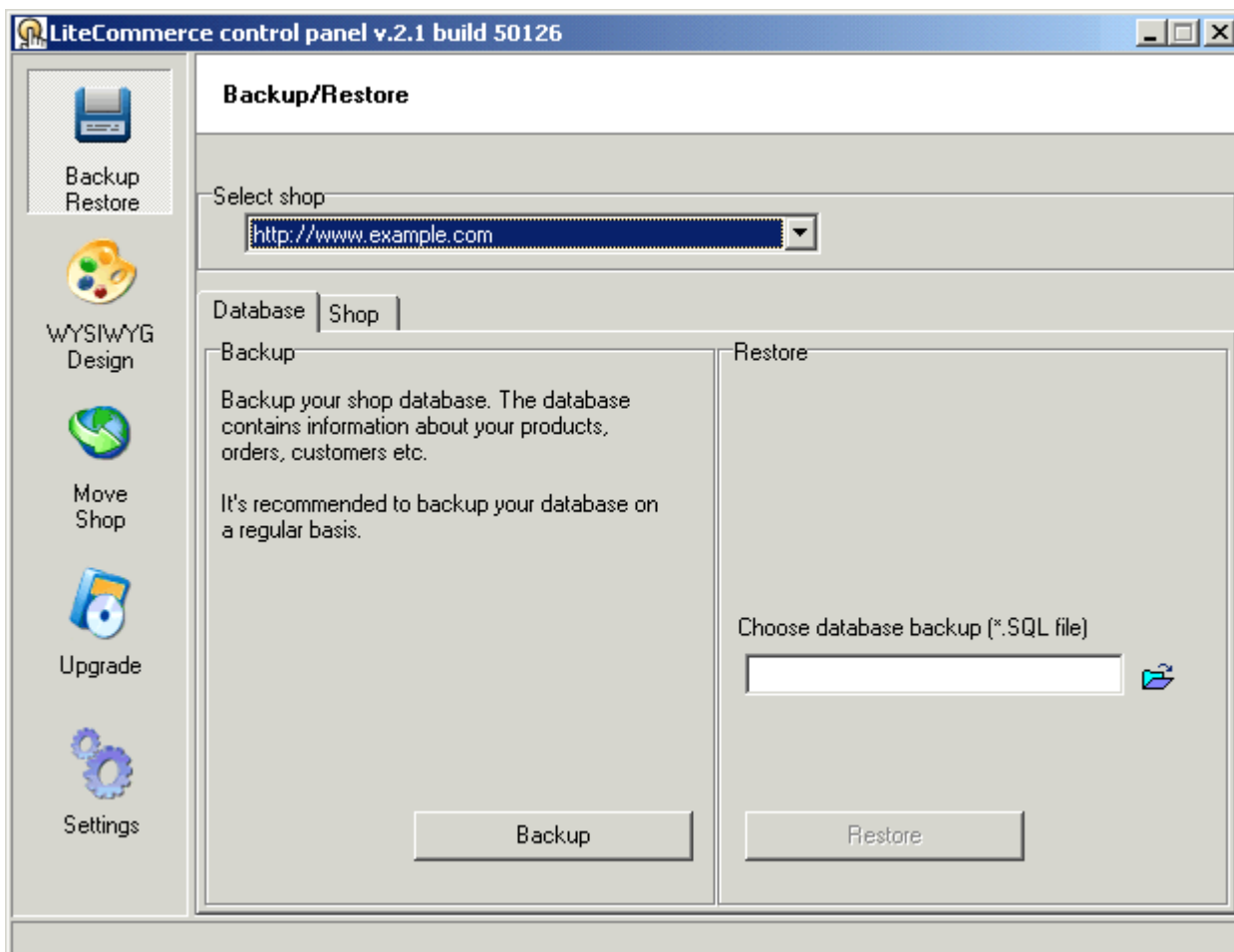


Fig. 5: Backup/Restore section

To record all the details about your products, orders, customers, etc to the SQL file (*.sql*) you need to create a **backup of your online store database**. To create a database backup, perform the following actions:

1. select the store you want to manipulate from a drop-down list;
2. choose the '**Database**' tab;
3. click on the '**Backup**' button;
4. specify the name and location of a backup file and click '**Save**';
5. when the backup process is complete, click '**Ok**' in the backup progress window to return to Control Panel.

Perform the following actions to restore the online store database:

1. choose the SQL file containing the database dump you want to restore;
2. click on the '**Restore**' button;
3. when the database is restored, click '**Ok**' in the restore progress window to return to Control Panel.

In addition to database backup you can create a full backup of your entire store. To create the full store backup, perform the following actions:

1. choose the '**Shop**' tab;
2. specify whether you want the database dump to be included in the backup;
3. click on the '**Backup**' button;
4. specify the name and location of a backup file and click '**Save**';
5. when the backup process is complete, click '**Ok**' in the backup progress window to return to Control Panel.

To restore the data from a backup, perform the following actions:

1. choose the TAR file (*.tar*);
2. checkmark the '**Update information in configuration files**' option if your store global settings have changed since the time when the backup file was produced (if the option is checked, the '**etc/config.php**' file is modified according to the information provided in the Control Panel settings for the given store);
3. checkmark the '**Restore default UNIX permissions**' option if you are not sure whether the store backup has secure UNIX permissions or not (if the option is checked, the following operation is performed: '**chmod 644 etc/config.php; chmod 755 .**');
4. click on the '**Restore**' button;
5. when the restore procedure is complete, click '**Ok**' in the restore progress window to return to Control Panel.

**Note:** It is recommended that you perform backups of your online store on a regular basis.

### 3. Customizing the Design of Your Online Store

Changing the design of your store using LiteCommerce Control Panel for Windows is easy. All manipulations with design can be done from the '**WYSIWYG Design**' section (Fig. 6).

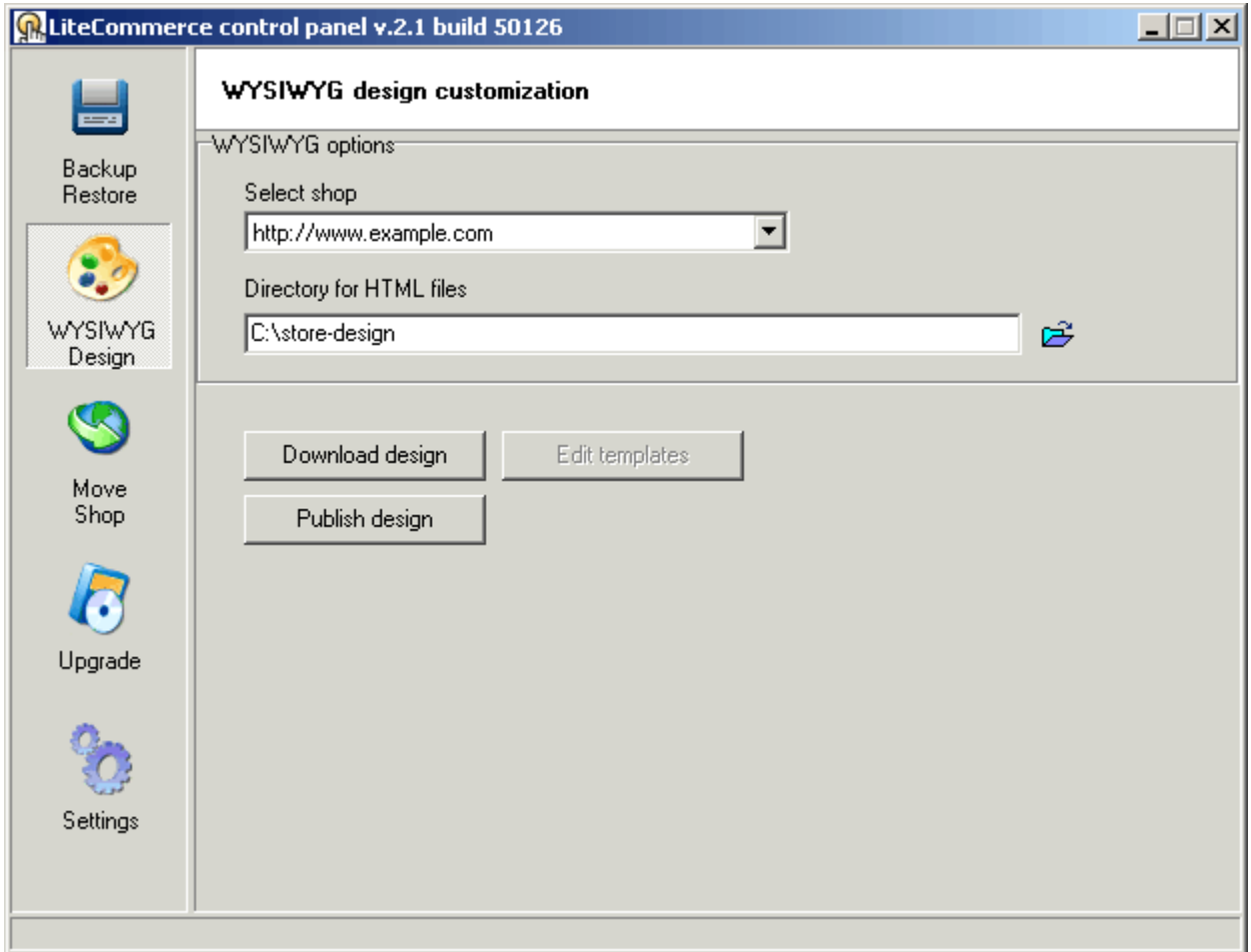


Fig. 6: Customizing the store design

First you need to download the design template files to your local computer:

1. select the store from a drop-down list;
2. specify the directory on your computer where you want the templates to be stored;
3. click on the '**Download design**' button;
4. a download progress window will appear, click on '**OK**' when the download is finished.

After a successful design download, the '**Edit templates**' button will be activated. Click on it to see the list of template files. Choose the file you want to edit and double-click on it to open it in your default HTML editor (See section '**1.c. Specifying the default HTML editor**' of this manual for details). When you are done editing the file, save it in a usual way in your HTML editor and exit the editor.

To apply your new design to your online store, take the following steps:

1. in the '**WYSIWYG Design**' section select the store from a drop-down list;
2. specify the directory on your local computer where the templates are located;
3. click on the '**Publish design**' button;
4. you will be offered a list of existing template files; place checkmarks against the templates that you want to publish and click on the '**Publish**' button;
5. upload progress window will appear, click on '**Ok**' when upload is finished.

**Note:** It is highly recommended that you back up of your online store before applying a new design.

## 4. Moving Your Online Store to a New Location

The **'Move Shop'** section of the Control Panel for Windows utility provides an easy way to move your entire store to a different location. First you need to define a new store in the **'Settings'** section (See section **'1.a. Defining online stores'** of this manual for details on how to add a new store).

**Note:** When you define a new store location, do not use the **'Test Settings'** button. It will fail during **'Checking shop administrator's settings'** since the store wouldn't exist at the specified new URL until you copy it there.

When the new store has been defined, proceed to the **'Move Shop'** section and perform the following actions:

1. select the source and destination stores from drop-down lists;
2. click on the **'Move Shop'** button (Fig. 7);
3. when the data is copied, click on **'Ok'** to return to Control Panel.

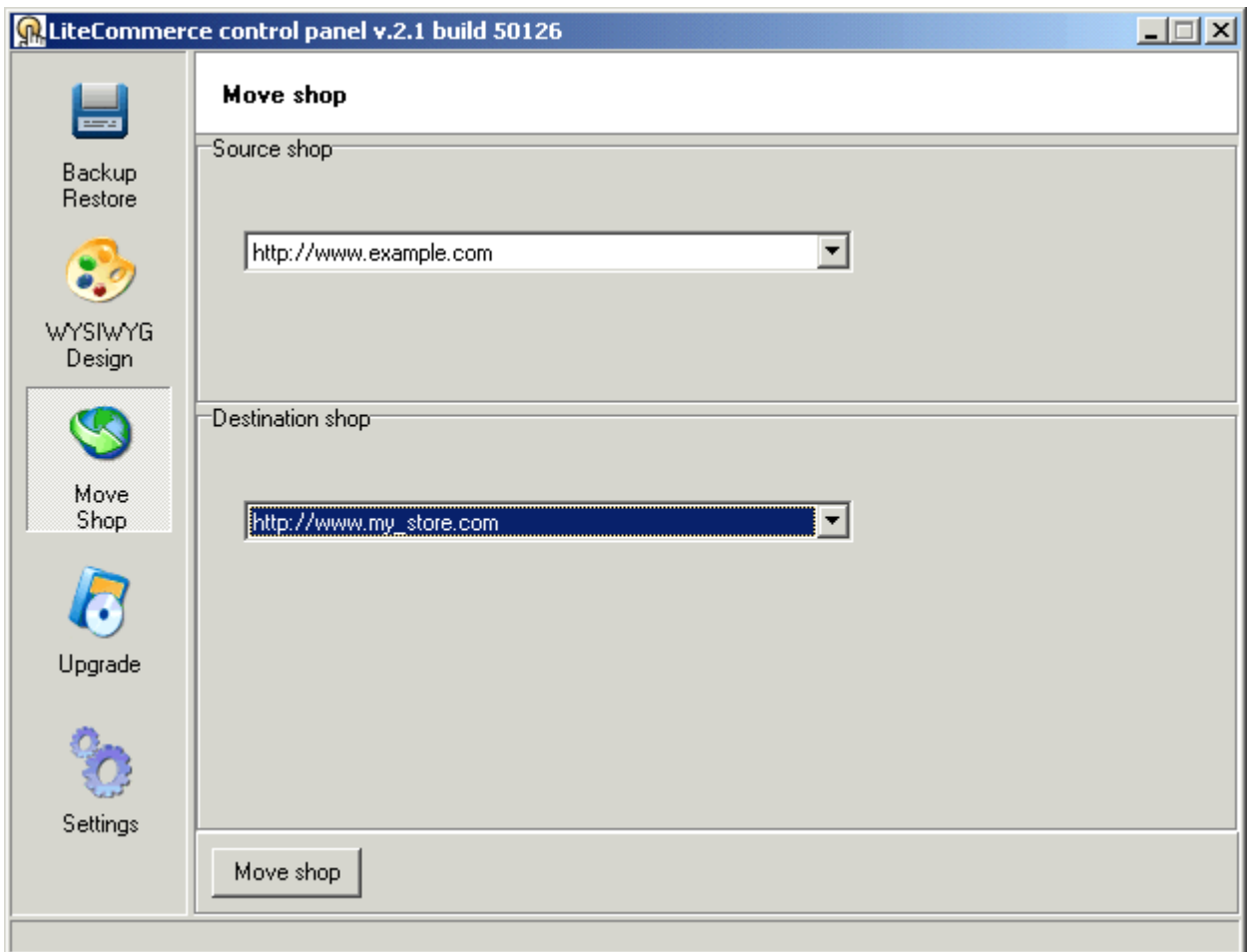


Fig. 7: Moving a store to a new location

You can now run the store at the new location. Please keep in mind that LiteCommerce License Agreement grants you the right to run the LiteCommerce Software on one e-commerce store only. To have your license transferred to a new host, take the following steps:

1. log into your personal HelpDesk area at: <https://secure.qualiteam.biz>;
2. go to '**My licenses**' section and click on the '**Change URL**' link next to the license;
3. complete the request form and hit the '**Request change URL**' button to submit the request.

Processing the request takes one business day. You will receive a notification when your new **License Certificate** is issued. To complete the transfer process, take the following steps:

1. log into your personal HelpDesk area at: <https://secure.qualiteam.biz>;
2. go to '**My licenses**' section and click on the '**Certificate**' link next to the license;
3. copy all the text from the '**License certificate**' window into a file (you should copy both the customer information part and the license part);
4. log into the **Admin zone** of your new online store and choose the '**License**' section from the '**Maintenance**' menu;
5. enter the license text in the '**License text**' field and hit the '**Install/Update license**' button.

**Note:** You might consider using **development license certificate** during the transfer process. To learn more about development license certificates, please consult **LiteCommerce reference manual**.

## 5. Upgrading Your Online Store

The **'Upgrade'** section of the Control Panel for Windows utility allows the store administrator to perform upgrades of a LiteCommerce online store.

**Note:** It is highly recommended that you run a full backup of your online store before you perform an upgrade.

Proceed to the **'Upgrade'** section (Fig. 8) and perform the following actions:

1. in a drop-down list select the store you want to upgrade;
2. select the upgrade file you want to apply to your current installation;
3. click on the **'Upgrade'** button to start the upgrade process (upgrade progress window will appear);
4. after the successful installation, click on **'Ok'** in the upgrade progress window to return to Control Panel.

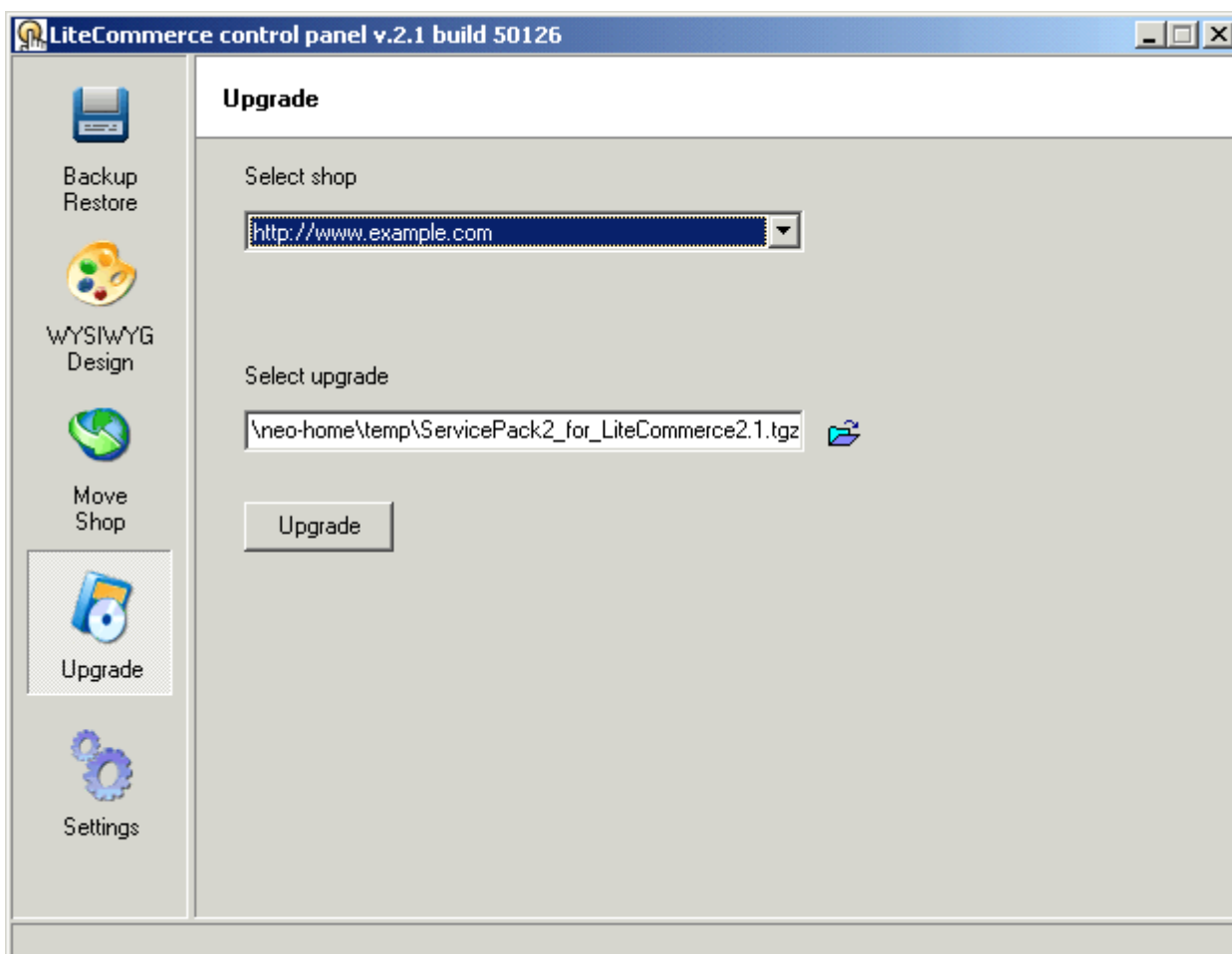


Fig. 8: Upgrading online store installation